

Criteria for visual inspection of a composite hose

A hose showing any of the following defects is deemed unsuitable for further use and should be withdrawn for service pending possible repair or replacement.

A)

Corrosion of the outer wire/50 % reduction of the outer wire caused by scuffing, chemical attack, rusting etc



B)

Serious displacements of the outer wire
(More than 50% lateral movement of the hose pitch)



C)

Collapse of the inner wire



D)

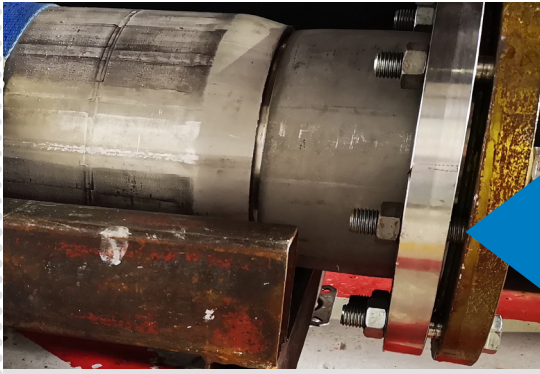
Severe impact damage to the hose body
(3 or more dents deeper than 6mm that cannot be knocked out)



E)

Serious scuffing of the outer cover
(Through to the inner reinforcing fabrics)



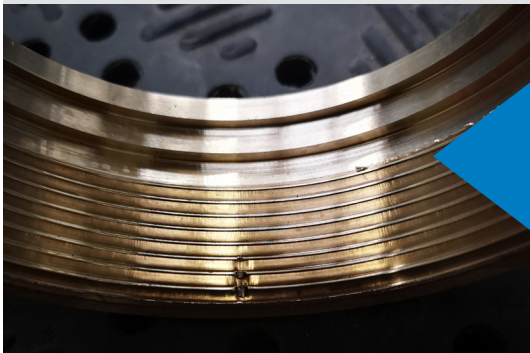


F)

**Ends moving away
from ferrule**

G)

**Severely corroded couplings
can result in loss of continuity**

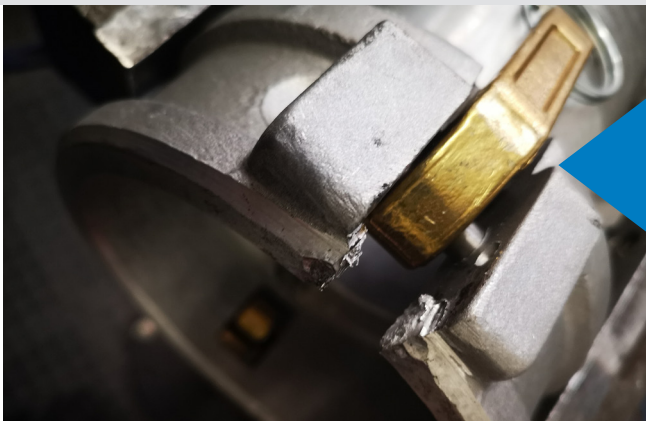


H)

**Damaged end couplings
(Thread damage, distorted,
oval, fractured etc)**

I)

**All threads to be checked with a
spool adaptor
(Must be a free running thread)**



J)

**All camlocks to be checked
for distortion/cracks**

www.dantec.com

World Leader in Composite Hose Technology



Registered Office: Tarran Way Moreton Wirral CH46 4TL
Registered Number: 1057158
Registered to EN ISO 9001 England & Wales